

Yukon Mineral Exploration, Development and Mining Activity 2025

MINING AND EXPLORATION PROJECTS

Commodity

- silver
- gold
- copper
- nickel +/- PGE
- lead/zinc
- tungsten
- unknown

Exploration projects deposit type

- ✚ iron oxide breccias/vein
- △ mafic/ultramafic associated
- mississippi valley type
- porphyry/sheeted vein
- ⬡ skarn/replacement
- ◇ sediment associated
- ◇ vein/breccia
- ▽ volcanic associated
- ☆ unknown

Mining projects development phase

- 🔍 planning, design and assessment
- 🏗️ assessment complete; may proceed to approvals
- ⚙️ fully permitted; may proceed to construction
- ⚙️ operation and production
- ⚙️ temporary closure

Drilling program

- indicates drilling program

MAP FEATURES

- community
- ★ capital city
- 🚢 deep water port

Parks and protected areas

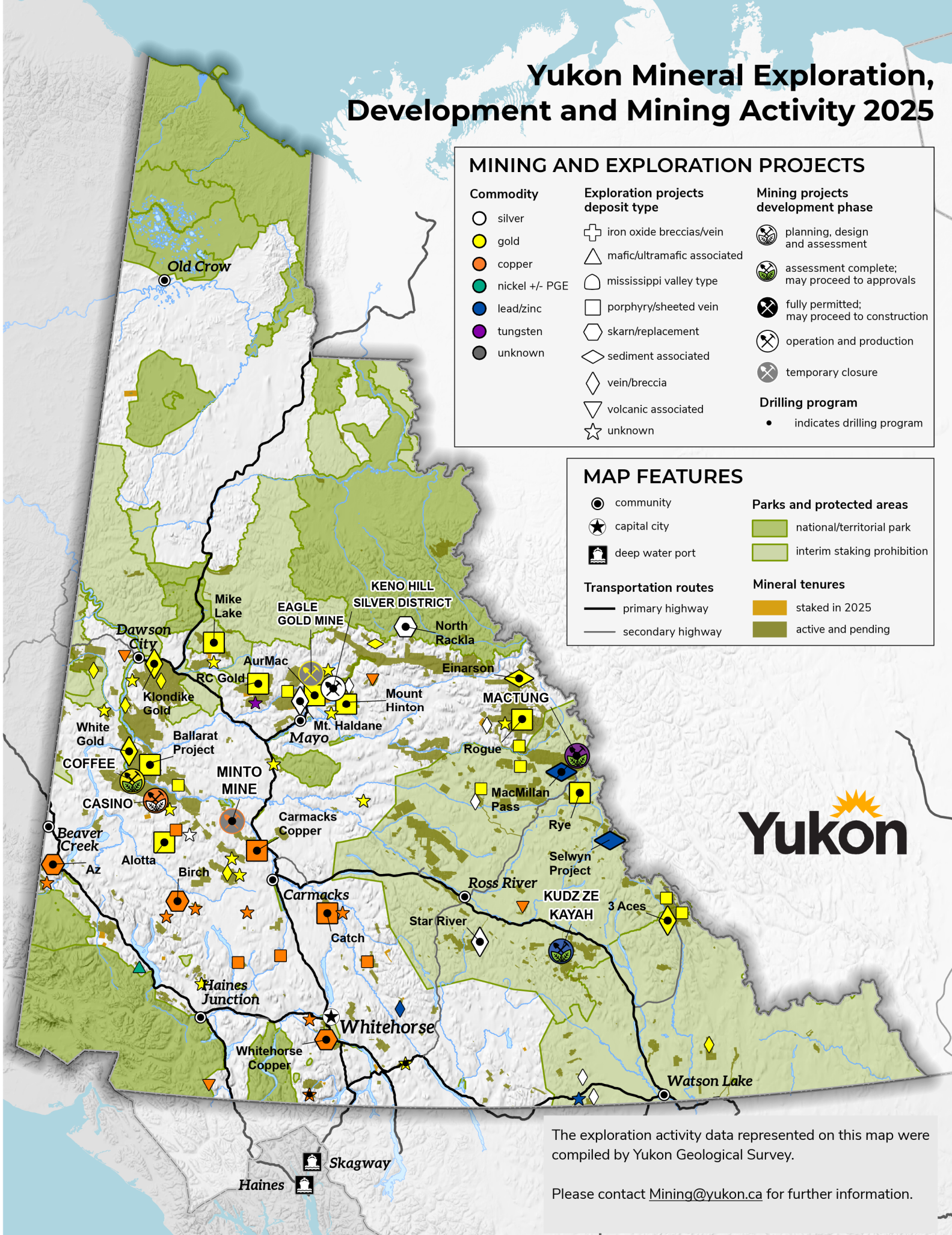
- 🌿 national/territorial park
- 🌿 interim staking prohibition

Transportation routes

- primary highway
- secondary highway

Mineral tenures

- 🟡 staked in 2025
- 🟢 active and pending



The exploration activity data represented on this map were compiled by Yukon Geological Survey.

Please contact Mining@yukon.ca for further information.